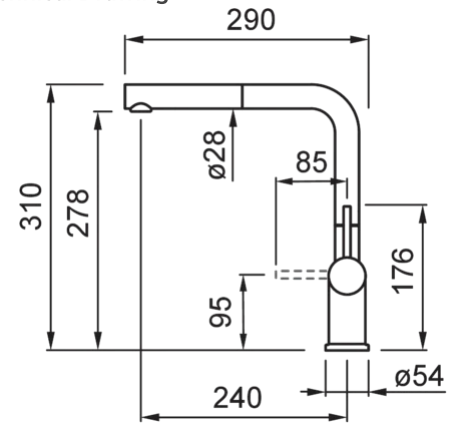


STREAM PLUS



Technical Drawing



FEATURES

| | |
|--------------------|---|
| Description | Single-lever tap with swivel spout and pull-out sprayer |
| Model | STREAM PLUS |
| Base (mm) | 50 |
| (ømm) | 35 |
| | 360° |
| Flexi-hose | Stainless Steel 3/8" |
| (ømm) | 35 |



LOGISTIC DATA

| | |
|---------------------------------|---------------|
| Gross Weight (kg) | 2,82 |
| Net Weight (kg) | 2,52 |
| Packaging Dimension (kg) | 48,5 x 25 x 9 |
| Packaging Volume (kg) | 0,011 |

PACKAGING FEATURES

| | |
|------------------|---------------|
| Packaging | Cardboard box |
|------------------|---------------|

KERATEK



MKKSTP86 K86
8032557560210



MKKSTP96 K96
8032557560227



MKKSTP99 K99
8032557560791



MKKSTP95 K95
8032557561514

GRANITEK



MGKSTP39 G39
8031873005047



MGKSTP59 G59
8031873102159



MGKSTP62 G62
8031873101787

GRANITEK

METAL



MMKSTP79 M79
8031873550868

GRANITEK

MATT



MGKSTP78 G78
8031873104511



MGKSTP40 G40
8031873102821



MGKSTP48 G48
8031873102104



MGKSTP68 G68
8031873102838



MGKSTP43 G43
8031873103637

GRANITEK

CLASSIC



MGKSTP51 G51
8031873103798

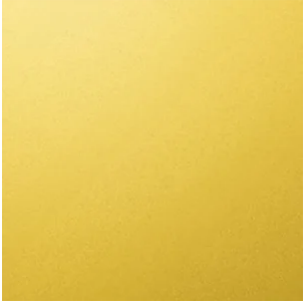
CROMATO



MIKSTPCR CR
8031873650759



MOKSTPBK BK
8032557561958



MOKSTPGD GD
8032557561965

